



EASY FOLD



ELLIPSE CONFERENCE

KOMBY TRAINING SPECIFICATIONS

KOMBY T-BASE

Base is made of 1.25", 14 gauge round tubular steel. Base spread is 22" or 26" T spread, depending on size of tabletop. Base is formed on automated tube bender for maximum consistency and quality. Column made of 1-1/2" x 3", 11 gauge OVAL tubular steel and notched to accept base plate. Top plate is 8"x8" or 11"x11" stamped steel, depending on size of tabletop. Komby "T" base is a completely welded one piece base, no tie-rod assembly. The top plate is welded to the vertical column and the vertical column is welded to the horizontal base plate. Base mounts to tabletop with 1/4-20 x 1" machine screws into metal inserts in top; no wood screws are used. Stretcher steel bars are used on tops over 72" long for maximum support to prevent bowing or warping. Factory installed nylon feet in a choice of 7 designer colors are pressure fit into base ends that are fitted standard with adjustable glides. Adjustable glides are fitted into the feet & self-leveling zinc rubber cushion steel glides are standard.

FOLDING MECHANISM: On folding models, lightweight designer-styled mechanism offers soft visual aesthetics ("non-industrial look"), consists of a nylon injection molded housing, cast aluminum pivot and metal locking slider. Rigid, taper locking design is activated by single lever that also locks in folded position.

TABLE TOPS

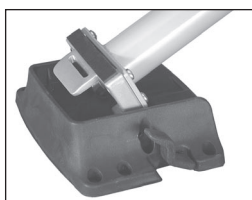
Table top core is **CARB Compliant** 1.25" particle board. Laminate, wood veneer and phenolic backing are glued with water based adhesives.

STATIONARY BASE OPTIONS

- **METALLIC CHROME BASE** - Code: PC Add the following to list by base:
22" \$80 26": \$95
- **GANGING** - Code: GD Add \$105 list per table
- **TABLE ACCESSORIES** - Grommets, Wire Management, Power & Communication Options, see pages 138-143.



Detail Komby Foot and Glide



Detail of Folding Mechanism

ORDERING INFORMATION

- | | |
|----------------------|------------------------------|
| 1) Series Name | 6) Laminate Selection & No. |
| 2) Model Number | 7) Edge Style Code and Color |
| 3) Size | 8) Wood Species |
| 4) Quantity | 9) Wood Stain Color |
| 5) Epoxy Frame Color | 10) Nylon Foot Color |

FINISHES | EDGES

TABLE BASES AND LEGS: finished in your choice of 24 standard epoxy powder coat colors. Finishes listed at beginning of price list. For colors refer to "Color Selections" brochure. For actual color samples, please call Customer Service.

LAMINATE SELECTIONS: ERG offers over 1000 standard laminate choices from Nevamar, Wilsonart, Formica and Pionite.

VENEER SELECTIONS: ERG offers 3 species of wood veneer; Maple, Cherry and Oak in 16 stain colors with custom stain matching.

WOOD EDGE STAIN COLORS: For colors refer to "Color Selections" brochure. For actual color samples, please call ERG Customer Service.


FOR ADDITIONAL TABLE STAIN INFORMATION AND COLORS:
See specifiers at beginning of Table Section.


KOMBY NYLON FOOT COLORS:


Black, Grey, Teal, Navy Blue, Taupe, Charcoal, Burgundy


ERG's Signature Features:

- ERG makes the strongest and most eco friendly tables
- Base is completely welded, no tie rod is used, no base assembly required
- Base is sandblasted prior to paint for best adherence of paint to metal
- Metal inserts are used on all tops for best metal to metal connection
- ERG International is a member of U.S. Green Building Council (USGBC)
- ERG uses only water based stains, lacquers, glues and adhesives
- ERG complies with CARB (California Air Resource Board) see page 159

KOMBY RECTANGLE STATIONARY													
 RECTANGLE	Model Number	Table Top Size	Shpg. Wght.	Base Spread	LAMINATE TOP ASSORTED EDGES							VENEER TOP	
					GRP 1	GRP 2	GRP 3	GRP 4	GRP 5	GRP 6	GRP 7	GRP 8	GRP 9
					KM2448	24 X 48	67	2-22T	882	918	1024	1166	1502
KM2460	24 X 60	94	2-22T	934	974	1096	1259	1644	1746	1949	3147	4247	
KM2472	24 X 72	94	2-22T	981	1027	1163	1344	1774	1888	2114	3359	4391	
KM2484	24 X 84	121	2-22T	1123	1174	1326	1529	2011	2137	2391	3822	5011	
KM2496	24 X 96	130	2-22T	1168	1223	1389	1610	2135	2273	2549	4025	5245	
KM3072	30 X 72	108	2-22T	1037	1088	1240	1444	1927	2054	2309	3609	4679	
KM3084	30 X 84	137	2-22T	1222	1282	1464	1706	2281	2433	2735	4265	5521	
KM3096	30 X 96	148	2-22T	1247	1310	1499	1752	2351	2509	2824	4379	5652	
KM3696	36 X 96	168	2-22T	1257	1325	1512	1763	2370	2540	2837	4390	5664	

KOMBY RACETRACK													
 RACERACK	Model Number	Table Top Size	Shpg. Wght.	Base Spread	LAMINATE TOP ASSORTED EDGES							VENEER TOP	
					GRP 1	GRP 2	GRP 3	GRP 4	GRP 5	GRP 6	GRP 7	GRP 8	GRP 9
					KM3096RT	30 X 96 *	148	2-22T	1476	1562	1820	2164	2982
KM3696RT	36 X 96	166	2-26T	1599	1091	1388	1785	2132	2528	2975	3793	4361	

KOMBY ELLIPSE													
 ELLIPSE	Model Number	Table Top Size	Shpg. Wght.	Base Spread	LAMINATE TOP ASSORTED EDGES							VENEER TOP	
					GRP 1	GRP 2	GRP 3	GRP 4	GRP 5	GRP 6	GRP 7	GRP 8	GRP 9
					KM3072E	30 X 72	108	2-22T	1690	1798	2120	2549	3570

KOMBY RECTANGLE EASY FOLD													
 RECTANGLE	Model Number	Table Top Size	Shpg. Wght.	Base Spread	LAMINATE TOP ASSORTED EDGES							VENEER TOP	
					GRP 1	GRP 2	GRP 3	GRP 4	GRP 5	GRP 6	GRP 7	GRP 8	GRP 9
					KMF2460	24 X 60	75	2-22T	1154	1195	1316	1479	1864
KMF2472	24 X 72	84	2-22T	1201	1247	1383	1564	1994	2108	2334	3909	5244	
KMF2484	24 X 84	111	2-22T	1343	1394	1546	1749	2231	2357	2611	4372	5864	
KMF2496	24 X 96	120	2-22T	1388	1443	1609	1830	2355	2493	2769	4575	6097	
KMF3060	30 X 60	86	2-22T	1205	1250	1387	1570	2003	2118	2346	3924	5261	
KMF3072	30 X 72	98	2-22T	1257	1308	1460	1664	2147	2274	2529	4159	5531	
KMF3084	30 X 84	127	2-22T	1442	1502	1684	1926	2501	2653	2955	4815	6373	
KMF3096	30 X 96	145	2-22T	1467	1530	1719	1972	2571	2729	3044	4929	6504	
KMF3660	36 X 60	100	2-26T	1279	1332	1492	1704	2209	2342	2608	4261	5648	
KMF3672	36 X 72	113	2-26T	1339	1398	1575	1811	2372	2520	2816	4528	5955	
KMF3684	36 X 84	150	2-26T	1504	1571	1771	2038	2672	2839	3173	5095	6695	
KMF3696	36 X 96	163	2-26T	1554	1610	1790	2110	2712	2890	3212	5110	6710	



Nesting Table Example

MOBILE TRAINER SPECIFICATIONS

KOMBY MOBILE TRAINER BASE

Base is made of 1.25", 14 gauge round tubular steel. Base spread is 14" or 18" C spread, depending on size of tabletop. Base is formed on automated tube bender for maximum consistency and quality. Column made of 1-1/2" x 3", 11 gauge OVAL tubular steel and notched to accept base plate. Top plate is a custom 4"x4" diamond shape stamped steel. Komby Trainer base is a completely welded one piece base, no tie-rod assembly. The top plate is welded to the vertical column and the vertical column is welded to the horizontal base plate. A set of black nylon non-locking casters are assembled to each side of the column. Two each flip-top mechanisms incorporate handles on both sides of table for ease of use. Base mounts to tabletop with 1/4-20 x 1" machine screws into metal inserts in top; no wood screws are used. Factory installed nylon feet in a choice of 7 designer colors are pressure fit into base ends that are fitted standard with adjustable glides. Adjustable glides are fitted into the feet & self-leveling zinc rubber cushion steel glides are standard.

KOMBY FLIP FOLD

These table tops can be "flipped up" in the horizontal position, pushed together and nested against the wall for storage. Two each flip-top mechanisms offers soft visual aesthetics ("non-industrial look"), consists of a nylon injection molded housing, cast aluminum pivot and metal locking slider. Rigid, taper locking design is activated by single lever that also locks in folded up position. Flip-top tables incorporate handles on both sides of table for ease of use in "flipping" tables up and down for storage. This is designed for one person to activate the mechanism.

TABLE TOPS

Table top core is **CARB Compliant** 1.25" particle board. Laminate, wood veneer and phenolic backing are glued with water based adhesives.

OPTIONS

- **TABLE ACCESSORIES** - Grommets, Wire Management, Power & Communication Options, see pages 224-227.

ORDERING INFORMATION

- 1) Series Name
- 2) Model Number
- 3) Size
- 4) Quantity
- 5) Laminate Selection & No.
- 6) Edge Style Code and Color
- 7) Nylon Foot Color
- 8) Options

FINISHES | EDGES

TABLE BASES AND LEGS: finished in your choice of 24 standard epoxy powder coat colors. Finishes listed at beginning of price list. For colors refer to "Color Selections" brochure. For actual color samples, please call Customer Service.

LAMINATE SELECTIONS: ERG offers over 1000 standard laminate choices from Nevamar, Wilsonart, Formica and Pionite.

VENEER SELECTIONS: ERG offers 3 species of wood veneer; Maple, Cherry and Oak in 16 stain colors with custom stain matching.

FOR TABLE STAIN INFORMATION AND COLORS:
See specifiers at beginning of Table Section on page 189.

KOMBY NYLON FOOT COLORS:
Black, Grey, Teal, Navy Blue, Taupe, Charcoal, Burgundy

ERG's Signature Features:

- ERG makes the strongest and most eco friendly tables
- Base is completely welded, no tie rod is used, no base assembly required
- Base is sandblasted prior to paint for best adherence of paint to metal
- Metal inserts are used on all tops for best metal to metal connection
- ERG International is a member of U.S. Green Building Council (USGBC)
- ERG uses only water based stains, lacquers, glues and adhesives
- ERG complies with CARB (California Air Resource Board) see page 159.

KOMBY | MOBILE TRAINER

RECTANGLE

Model Number	Table Top Size	Shpg. Wght.	Base Spread	LAMINATE TOP ASSORTED EDGES							VENEER TOP	
				GRP 1	GRP 2	GRP 3	GRP 4	GRP 5	GRP 6	GRP 7	GRP 8	GRP 9
KTRN1848	18" X 48"	95	2-16T	1097	1132	1236	1376	1707	1794	1969	3439	4703
KTRN1860	18" X 60"	94	2-16T	1125	1163	1276	1427	1786	1880	2069	3568	4851
KTRN1872	18" X 72"	121	2-16T	1260	1303	1430	1599	2002	2108	2320	3998	5434
KTRN2248	22" X 48"	130	2-20T	1232	1272	1391	1549	1926	2025	2223	3873	5290
KTRN2260	22" X 60"	108	2-20T	1152	1192	1313	1475	1858	1959	2161	3687	4988
KTRN2272	22" X 72"	148	2-20T	1194	1239	1373	1552	1976	2087	2311	3879	5209



MOBILE LECTERN



OPTIONAL ACCESSORY SHELF



OPTIONAL LECTERN LOGO

MOBILE LECTERN PODIUM SPECIFICATIONS

KOMBY MOBILE LECTERN PODIUM

Base is made of 1.25", 14 gauge round tubular steel. Base spread is 14" C spread. Base is formed on automated tube bender for maximum consistency and quality. Side support rails are made of 1.25", 14 gauge round tubular steel. Komby Lectern base is a completely welded one piece assembly. A set of black nylon non-locking casters are assembled to each side of the column. A 3/4" laminate top is finished with a 3mm PVC edge and the front panel is finished with a laminate self edge. Top and front panel are the same laminate. Base mounts to top and front panel with 1/4-20 x 1" machine screws into metal inserts; no wood screws are used. Factory installed nylon feet in a choice of 7 designer colors are pressure fit into base ends that are fitted standard with adjustable glides. Adjustable glides are fitted into the feet & self-leveling zinc rubber cushion steel glides are standard.

OPTIONS

- **LECTERN ACCESSORY SHELF** - Code: SH Add \$170 list per table
- **LECTERN LOGO** - Code: LO Add \$425 list per lectern
Standard logo is two color laminate inlay. Artwork must be provided.
- **ADDITIONAL LAMINATE** Top and front panel or shelf are different laminates. Code: AL Add \$225 list per lectern

ORDERING INFORMATION

- | | |
|-----------------|------------------------------|
| 1) Series Name | 5) Laminate Selection & No. |
| 2) Model Number | 6) Edge Style Code and Color |
| 3) Size | 7) Nylon Foot Color |
| 4) Quantity | 8) Options |

FINISHES | EDGES

BASE AND LEGS: finished in your choice of 24 standard epoxy powder coat colors. Finishes listed at beginning of price list. For colors refer to "Color Selections" brochure. For actual color samples, please call Customer Service.

LAMINATE SELECTIONS: ERG offers over 1000 standard laminate choices from Nevamar, Wilsonart, Formica and Pionite.

VENEER SELECTIONS: ERG offers 3 species of wood veneer; Maple, Cherry and Oak in 16 stain colors with custom stain matching.

WOOD EDGE STAIN COLORS: For colors refer to "Color Selections" brochure. For actual color samples, please call ERG Customer Service.

FOR ADDITIONAL TABLE STAIN INFORMATION AND COLORS:
See specifiers at beginning of Table Section.

KOMBY NYLON FOOT COLORS:
Black, Grey, Teal, Navy Blue, Taupe, Charcoal, Burgundy

KOMBY | MOBILE LECTERN PODIUM

Model Number	Table Top Size	Height	Shpg. Wght	Base Spread	LAMINATE TOP ASSORTED EDGES	
					GRP 1	
KMPO	20" X 24"	42"	50	2-14T		1360
	Optional Shelf					320
	Optional Logo					685

Shown with optional Lectern Shelf